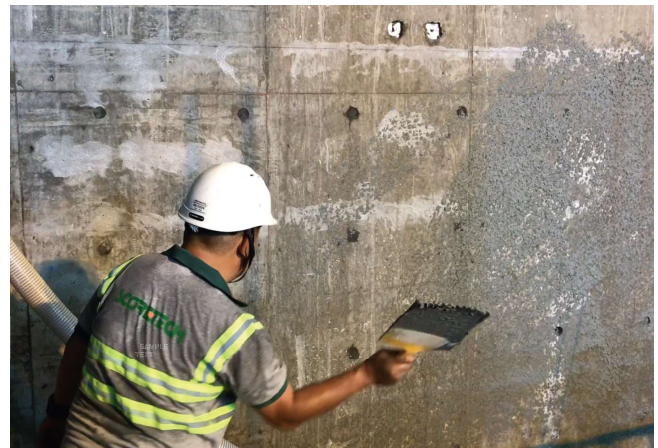


Dashcrete

ST-DC

Proprietary pre-batched dry mortar consists of selected cement, well-graded mineral filler and rheology modifying additives specially designed to mix with polymer latex for spatterdash and bond coat mortar application.



PRODUCT DESCRIPTION

ST-DC is a factory manufactured pre-bagged polymer modified cement sand mortar tailor-designed for spatterdash and bond coat mortar application when mixing with Score Tech Supreme Primer (ST-SP) or Score Tech Bond Coat Latex (ST-BCL). Spatterdash or bond coat mortar made of ST-DC provides robust mechanical keys on substrate surface (e.g., concrete, block/dry walls, etc.) for receiving plaster/render or other covering materials. Comparing with conventional site batched process, ST-DC does not only offer a better quality control in cement-sand-latex proportions but also provides larger convenience in materials storage and avoids wastage and environmental impact of bulk materials handling on site.

SUBSTRATE PREPARATION

The substrate must be sound, even, clean and free of loose particles, grease and any other unwanted contaminants. The substrate surface shall be moistened overnight and at the time before application. No stagnant or glistening water is allowed on the substrate surface before application.

FEATURES & BENEFITS

- ◆ Prebatched in ISO9001 certified factory
- ◆ Much better control in material proportions
- ◆ Outstanding adhesion to substrate
- ◆ High productivity and consistency
- ◆ Easy and convenient for storage
- ◆ Single component, easy to use
- ◆ Cost effective
- ◆ Less wastage
- ◆ Enhance site tidiness
- ◆ Less labour intensive
- ◆ Better quality control

AREAS OF APPLICATION

- ◆ Spatterdash/bond coat mortar
- ◆ Surface treatment on unfavourable substrate surface
- ◆ Consult Score Tech staff for other applications

MIXING & INSTALLATION

1. Spatterdash:
Mix ST-DC with either ST-SP or ST-BCL and water according to the recommended mixing ratio below with auger type electric mixer for about 2 – 5 minutes until a homogeneous mixture is obtained. Apply spatterdash to the substrate surface in a usual way with a spatterdash spreader or other suitable tools.
2. Bond Coat Mortar:
Mix ST-DC with either ST-SP or ST-BCL and water according to the recommended mixing ratio below with auger type electric mixer for about 2 – 5 minutes until a homogeneous mixture is obtained. Apply bond coat mortar to substrate surface with a brush or roller until full coverage.

CURING

Under normal circumstances, natural air curing is proven adequate for ST-DC using in spatterdash/bond coat mortar. However, water spray curing is beneficial to ensure the best performance under dry or windy condition.

MIXING RATIO FOR DIFFERENT APPLICATION PURPOSES

| Usage | | Mixing Ratio of Ingredients | | |
|------------------|------------|-----------------------------|----------|-----------|
| | | ST-SP / ST-BCL | Water | ST-DC |
| Spatterdash | By volume | ~3 L | ~7.5 L● | 1 bag |
| | By weight | ~3 kg | ~7.5 kg● | 40 kg |
| | By package | 1 pail (20kg) | ~50 L● | ~6.5 bags |
| Bond coat mortar | By volume | ~10 L | ~5 kg● | 1 bag |
| | By weight | ~10 kg | ~5 L● | 40 kg |
| | By package | 1 pail (20kg) | ~10 L● | 2 bags |

●The quantity of water stated above is for reference only. The actual quantity of water may slightly vary subject to the actual site condition and environmental factors.

PRODUCT INFORMATION

| | |
|--|--|
| Colour | Grey |
| Maximum Grain Size | 3.5 mm |
| Fresh Density (Spatterdash / Bond coat mortar) | ~1800 - 2000 kg/m ³ |
| Coverage | Spatterdash: ~120 - 340 m ² /package Bond coat mortar: ~60 - 120 m ² /package |
| Pot Life | ~1 - 2 hours |

PRODUCT PERFORMANCE

| | | Spatterdash | Bond coat mortar |
|---------------------------------|---|------------------------|------------------------|
| Compressive Strength at 28 days | HKHA MTS Spec. Pt.D, Cl.2.1.1 & BS 6319-2 | ≥ 30 N/mm ² | ≥ 30 N/mm ² |
| Flexural Strength at 28 days | HKHA MTS Spec. Pt.D, Cl.2.1.2 & BS 6319-3 | ≥ 6 N/mm ² | ≥ 6 N/mm ² |
| Adhesion to Concrete at 28 days | HKHA MTS Spec. Pt.D, Cl.2.1.15 | ≥ 2 N/mm ² | ≥ 2 N/mm ² |

* Note: The test standards for the product performance stated above refer to laboratory test only.

DISCLAIMER

Note: As the application condition may vary from site to site and may not be identical to the same condition under which the parameters in the brochure are drawn, the information provided on this Technical Data Sheet is for general guidance only. Warranty will not be given to the ultimate performance and application results of this material when the material is not kept, mixed, applied or cured strictly in accordance with the requirements and/or instructions listed out in this brochure or in other supplementary document.

PACKAGE

40 kg bag

SHELF LIFE

ST-DC has a shelf life of 12 months if well kept in dry condition on lifted floor.

HEALTH & SAFETY

Wear NIOSH approved face mask or equivalent personal protective equipment when handling the material. ST-DC contains cement which may cause an allergic effect or irritation to eyes and skin. When contact with eyes, flush immediately with large quantity of water.

REFERENCE STANDARDS

- ◆ Hong Kong Standard: HKHA MTS Spec. Part D

SCORETECH
MASTERING TECHNOLOGY AND PRACTICALITY

Tel: 852-2165 0900
Fax: 852-2590 0511
Email: enquiry@scoretech.com.hk
Website: www.scoretech.com.hk

DC-E-JUN2023.01