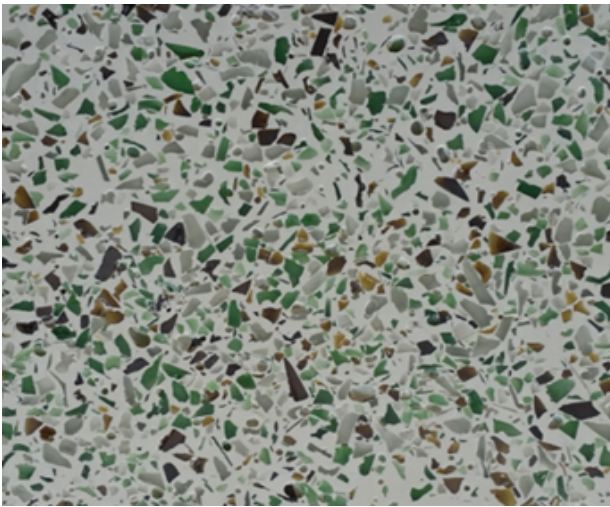


Recycled Décor Tiles

RDT

Recycled Décor Tiles are made of recycled fine concrete aggregates and recycled glass using innovative technologies to turn wastes to beauty. Other than the use of waste materials, the extremely high carbon footprint generated in the production process of conventional ceramic tiles is also eliminated.



PRODUCT DESCRIPTION

Score Tech Recycled Décor tiles are made of recycled fine concrete aggregates and various proportion of recycled glass bound with cementitious materials. Comparing with conventional ceramic, homogeneous or mosaic tiles, Score Tech Recycled Décor tiles do not require going through extremely high temperature calcination process and thus carry much lower carbon footprint. Recycled Décor tiles provide an environmental friendly solution to architectural finishing by turning waste materials to decorative products with large reduction in the consumption of natural resources and carbon footprint.

FEATURES & BENEFITS

- ◆ Factory made decorative tiles Using recycled concrete aggregates
- ◆ Using recycled glass granules
- ◆ Largely reduced carbon footprint
- ◆ Aesthetic effect
- ◆ Versatility in design

AREAS OF APPLICATION

- ◆ Wall & Floor tiles
- ◆ Tailor made sizes without limitation in mould
- ◆ Relatively small minimum order quantity (MOQ)

HEALTH & SAFETY

Score Tech Recycled Décor tiles do not contain hazardous materials and do not carry residue radiation after high temperature production process

DISCLAIMER

Note: As the application condition may vary from site to site and may not be identical to the same condition under which the parameters in the brochure are drawn, the information provided on this Technical Data Sheet is for general guidance only. Warranty will not be given to the ultimate performance and application results of this material when the material is not kept, mixed, applied or cured strictly in accordance with the requirements and/or instructions listed out in this brochure or in other supplementary document.